

**Dear Customer,
If you have any questions concerning the installation of your Banks Ram-Air Intake, please call our Technical Service Hotline at (800) 601-8072 between 8:00 am and 4:00 pm (PT). If you have any questions relating to shipping or billing, please contact our Customer Service Department at (800) 601-8072.
Thank you.**

General Installation Practices

1. Before starting work, familiarize yourself with the installation procedure by reading all of the instructions.
2. Throughout this manual, the left side of the vehicle refers to the driver's side, and the right side to the passenger's side.
3. Disconnect the negative (ground) cable from the battery (or batteries, if there are two) before beginning work.
4. Route and tie wires and hoses a minimum of 6" away from exhaust heat, moving parts and sharp edges. Clearance of 8" or more is recommended where possible.
5. When raising the vehicle, support it on properly weight-rated safety stands, ramps or a commercial hoist. Follow the manufacturer's safety precautions. Take care to balance the vehicle to prevent

it from slipping or falling. When using ramps, be sure the front wheels are centered squarely on the topsides. When raising the front of the vehicle, put the transmission in park (automatic) or reverse (manual), set the parking brake, and block the rear wheels. When raising the back of the vehicle, be sure the vehicle is on level ground and the front wheels are blocked securely. Caution! Do not use floor jacks to support the vehicle while working under it. Do not raise the vehicle onto concrete blocks, masonry or any other item not intended specifically for this use.

6. During installation, keep the work area clean. Do not allow anything to be dropped into intake, exhaust, or lubrication system components while performing the installation, as foreign objects will cause immediate engine damage upon start-up.

RECOMMENDED TOOLS

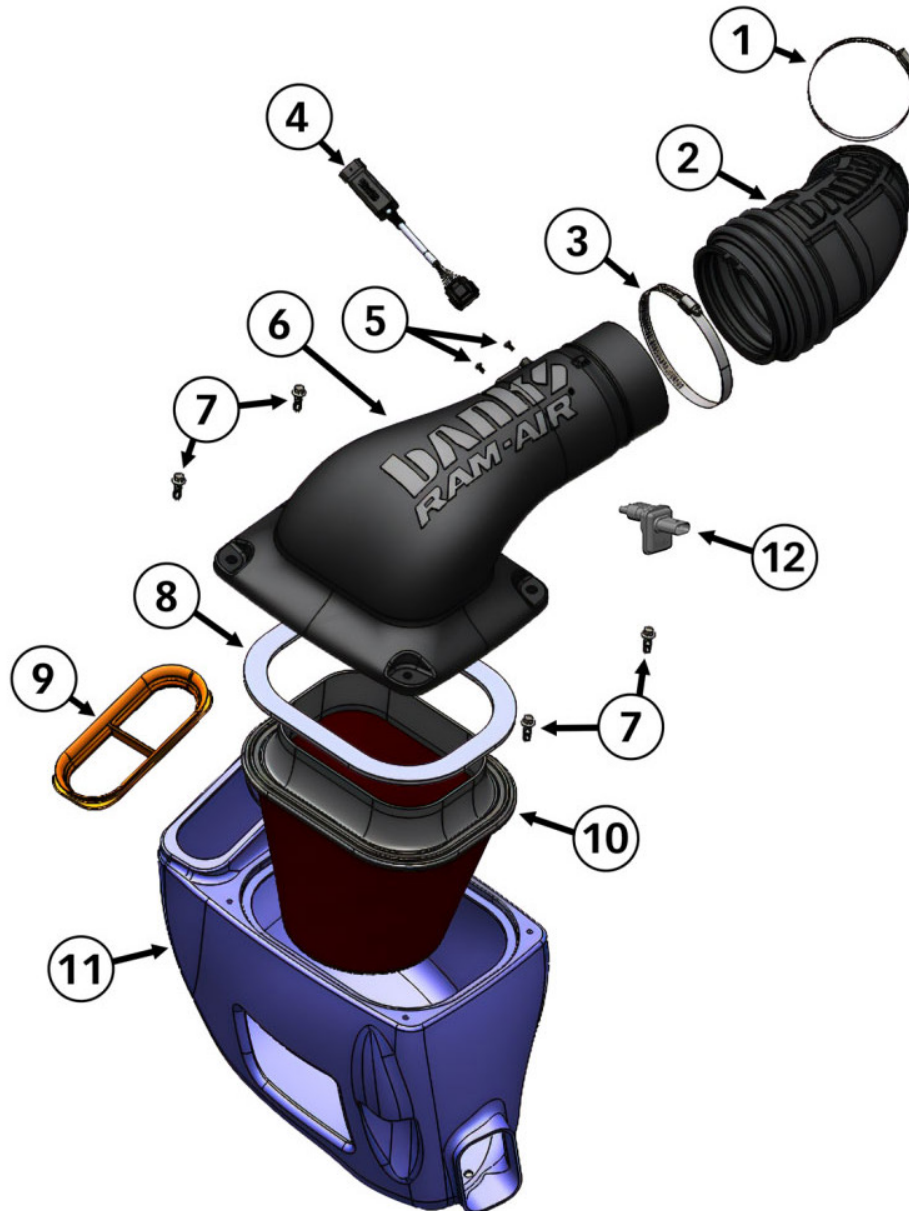


Ratchet with Extension
13mm Socket
10mm Socket

Philips Screwdriver
Flat Blade Screwdriver
T-20 Torx

Parts List

Item	Description	P/N	Qty
1	Hose Clamp #72	92872	1
2	Intake Tube Elbow	94008	1
3	Hose Clamp #88	92868	1
4	Air Mass Control Module	61253 (2020-2023) / 61256 (2024-2026)	1
5	MAF Sensor Screw	91912	2
6	Intake Super-Tube	42267	1
7	Hex Bolt, 1.25"	91233	4
8	Air Filter Housing Gasket	93031	1
9	Air Filter Housing Seal	93152	1
10	Air Filter Element	41829 (Oiled) / 41829-D (Dry)	1
11	Ram-Air Intake Filter Housing	42268	1
12	Crankcase Ventilation Control Module	61268 (2025-2026 only)	1





Section 1: Removing Stock Intake

1. With a 10mm socket, loosen and remove the negative terminal on both batteries.



2. To remove the Mass Air Flow Sensor, slide back the red locking tab. Then, press down with your thumb and pull, wiggling gently if necessary.



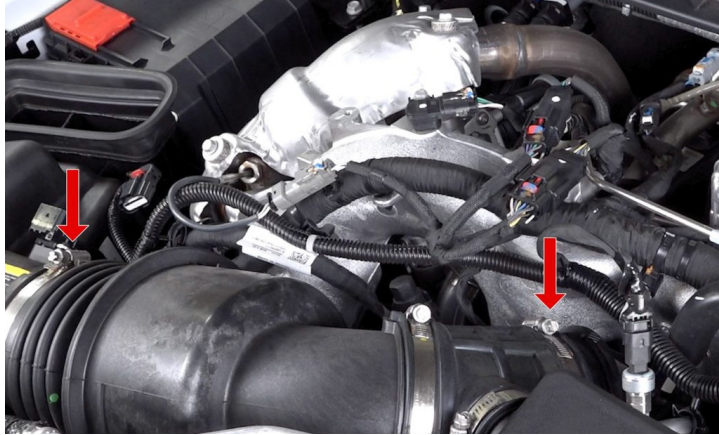
NOTE: Here's a closer look at how the connector actually works:

Pulling back the red locking tab allows you to press down the small black button that's just in front of the red tab. This button acts as one side of a teeter-totter. When you push it down the other side comes up.

As the other side comes up, it releases its grip and you can pull the plug away.



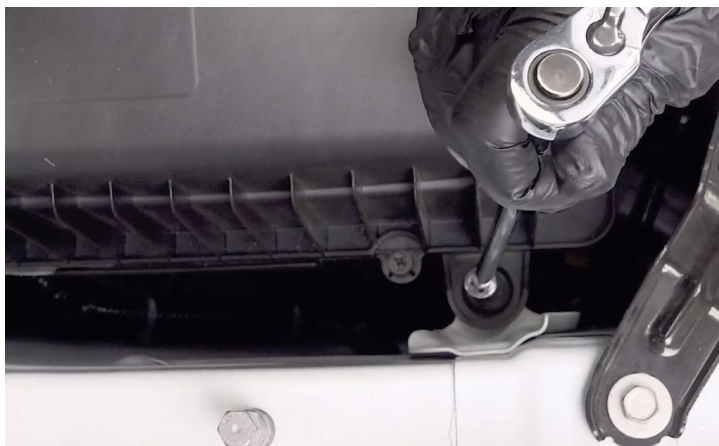
3. With a 13mm socket, remove the nut from the Air Intake Plenum.



4. Then loosen the two hose clamps as shown.



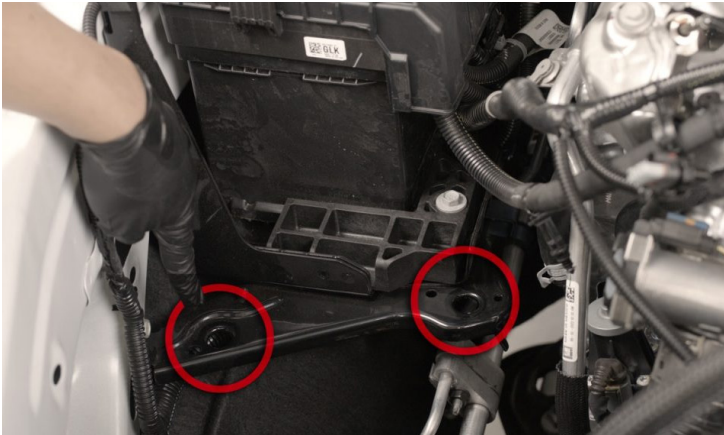
5. Then remove the OEM intake tube.



6. With a 10mm socket, remove the air filter housing mounting nut.



7. Remove stock air filter housing.

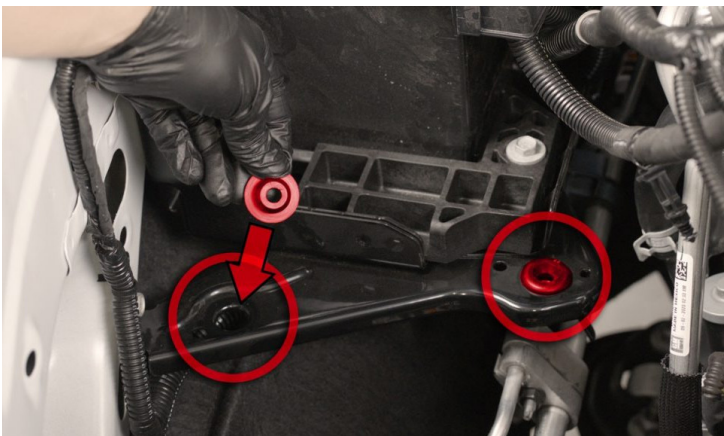


Note: Be sure not to lose the small grommets.



There are two small locating pins on the underside rear of the stock air filter housing that go into two small rubber grommets.

Due to dirt, grime, heat or age, these grommets may stick and still be attached to your stock air filter housing upon removal.



If these two grommets stay attached to the air filter housing, remove and re-install them back to the metal battery support bracket.

Be sure they press fit back into place. Failure to use these grommets will result in audible vibration.



8. Next, remove the Mass Airflow Sensor from the stock air filter housing using a T20 Torx bit.



9. Please note that the kit comes with new screws to secure MAF sensor into the Banks Intake Tube.

NOTE: Do not use the OEM screws in the Banks Intake tube. The OEM screws will strip the threads.



Section 2: Installing Your Banks Ram-Air Cold Air Intake System

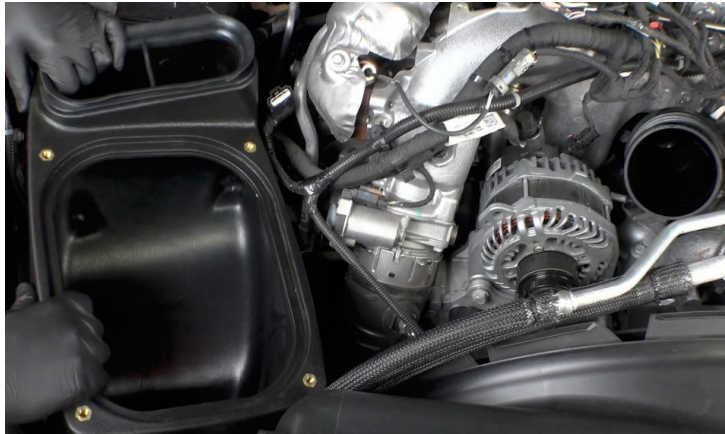
10. Next, install the Inlet Hood Seal and carefully work the seal into the corners.



11. Now let's remove the Large air filter housing Mounting Grommet from the stock intake.



12. The large grommet removed from the previous step, will transfer onto the new Banks Ram-Air Filter Housing.



13. Now it is time to install the new Banks Air-Filter Housing.

Take care that the Banks Air Filter Housing fully seats into the single front and two rear grommets.



14. With a 10mm socket, tighten the nut and secure the Air Filter Housing.



15. Next, install the Banks Big-Ass Air Filter into the Air Filter Housing.



16. Place the Gasket over the Air Filter.

NOTE: The gasket is only pictured in red for clarification.



17. Now place the #88 clamp, which is the larger one on the Air Filter Housing lid side, and the #72, the smaller clamp on to the turbo side.



18. Then install the Intake Tube as shown.

NOTE: You'll find an alignment tab on Intake lid. This tab should sit between the two notches on the rubber Intake Tube.

Make sure the intake tube ridge seats fully into the Banks elbow groove.



Make sure the ridge on the intake tube seats into the groove on the Banks elbow.



This shows improper installation.

Notice the Banks elbow is not fully seated over the groove and the alignment tab.



This shows correct installation.

The Banks elbow and alignment tab are fully seated now. This assures correct angle alignment and a proper seal.



19. Place the Lid over the Air Filter Housing.



Looking at the Air Filter Housing lid, you'll notice that one bolt hole is smaller than the rest.



20. Starting with the smallest bolt hole, insert all four, 5/16th bolts and hand-tighten. Then use a 10mm socket to snug them but be sure TO NOT over tighten.

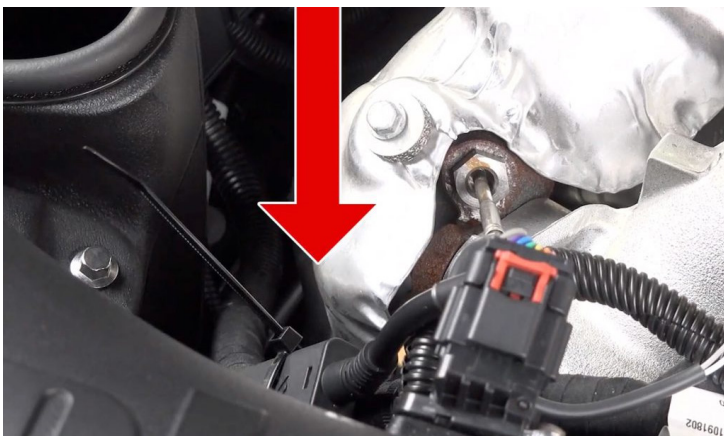


21. Now connect the Banks Air Mass Control Module to the Stock MAF Sensor Harness.



22. Then connect the other end of the Banks Air Mass Control Module to the stock MAF Sensor.

NOTE: Be sure to engage the red locking tab.



23. With the supplied push mount cable tie, secure the Air Mass Control Module away from any engine components that could get hot.



24. Check A/C line clearance.

Due to inconsistencies in the bends found in the factory air conditioning line, it may be necessary to gently adjust the line so it does not rub on the Banks intake tube. This should be done by hand. The line is made of soft aluminum and can be bent easily.



Steps 25 to 28 are for 2025-2026 models only:
25. Locate the PCV Pressure Sensor and disconnect the electrical connector. Be sure to disengage the locking mechanism.



26. Connect the Crankcase Ventilation Control Module to the PCV Pressure Sensor.



27. Then, plug the cable into the module.



28. Be sure to press the locking tab in once connect-ed.



29. Re-connect the negative terminals on the batteries.



Section 3: Reset Air Filter Life Monitor

30. Start the truck. Use the steering wheel controls to select the information screen on the dashboard. Its the icon with the lowercase "i".

For Base Vehicles: Turn the Trip Odometer button to select the Air Filter Life menu.



31. Toggle down to Air Filter Life, press the scroll wheel (or Trip Odometer button) to enter the menu.

Select Reset (Not Disable), then confirm Yes to recalibrate the Air Filter Life sensor to the new Ram-Air Intake.

For base vehicles: Press and hold the Trip Odometer button to reset.

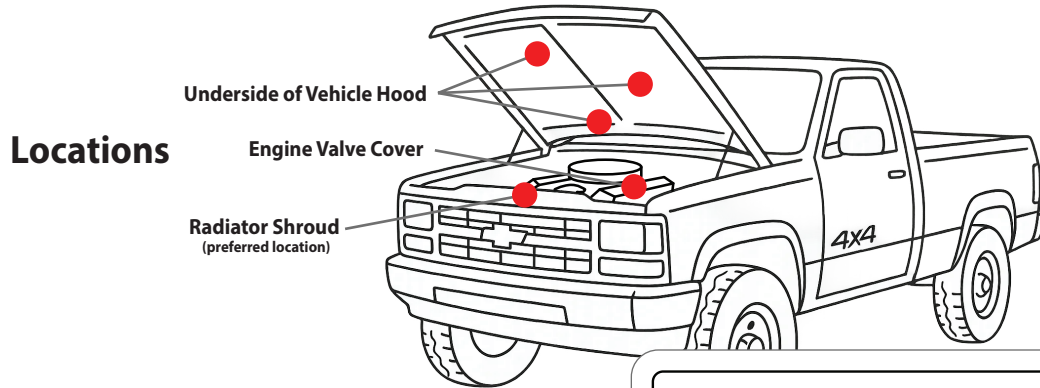


Now it's time to hit the road and enjoy your new Banks Ram-Air Intake System.

CARB EO label (if necessary)

For smog check purposes, affix the CARB E.O. Label on a visible location under the hood. Banks recommends using the radiator shroud location.

Vehicle CARB EO Label Placement



Sample Label

banks GALE BANKS ENGINEERING
546 DUGGAN AVE., AZUSA, CA 91702

CARB E.O. No. D-161-118
Banks Ram-Air Intake System
2001-2019 GM 6.6L, 1994-2015 Dodge Ram 5.9L/6.7L,
and 1999-2015 Ford 7.3L/6.0L, 6.7L Diesel Pickup

Gale Banks Engineering
546 Duggan Avenue • Azusa, CA 91702
• Call/Txt (800) 601-8072 •

Sales Support: 8:00am-5:00pm PT Monday-Friday
Order Status: 8:00am-5:00pm PT Monday-Friday
Installation Support: 8:00am-4:00pm PT Monday-Friday

bankspower.com